

RECORDATION REQUESTED BY: )

LTA LLC

State of Guam, Government of Guam  
Department of Land Management Office of the Recorder

File for Record Instrument No. 802505

AFTER RECORDATION, RETURN TO: )

LTA LLC

On the Year 10 Month 01 Day 24 Time 2:00

SUITE 201

Recording Fee 305 Receipt No. \_\_\_\_\_

125 TUN JESUS CRISOSTOMO STREET )

TAMUNING, GUAM 96913

Deputy Recorder 

THIS INSTRUMENT IS REGISTERED )

LAND, REGISTERED IN THE NAME OF )

THE FEE OWNER, THE CERTIFICATES )

OF LAST REGISTRATION BEING )

NUMBERS 65306 and 78943. )

RETURN BY: MAIL ( ) PICKUP (X) )

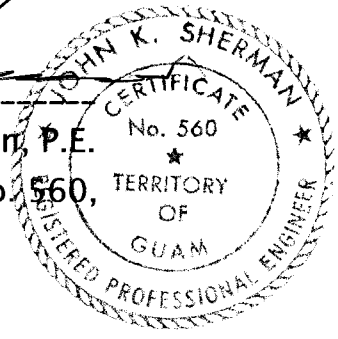
(SPACE ABOVE THIS LINE FOR RECORDER'S USE)

**FLOOR PLANS  
OF  
LADERA TOWERS CONDOMINIUM  
Lot Nos. 4 and 5, Tract No. 1822, Mangilao, Territory of Guam  
REGISTRATION NO. 104**

CERTIFICATE OF ENGINEER

I, the undersigned, a registered professional engineer, being duly sworn, hereby certify that to the best of my knowledge, information, and belief, the set of floor plans, site plan and elevation plans (copies of which are attached hereto as Exhibit A) for the Ladera Towers Horizontal Property Regime (Condominium) project constructed on Lot Numbers 4 and 5, Tract Number 1822, Barrigada, Guam, fully and accurately depict the layout, location, apartment numbers and dimensions of the apartments in said project and to the best of my knowledge, information and belief, said floor plans are an accurate copy of portions of the plans of said apartments and buildings as filed with and approved by the Director of the Department of Public Works of the Government of the Territory of Guam or his Deputy having jurisdiction over the issuance of permits for the construction of buildings within the Territory of Guam.

*[Handwritten Signature]*  
Name: John k. Sherman, P.E.  
Guam Registration No. 560,



GUAM )  
( SS:  
MUNICIPALITY OF AGANA )

On this 24th day of February 2010, before me appeared JOHN K. SHERMAN, to me personally known, who, being by me duly sworn, did say that he acknowledged his signature on the above CERTIFICATE OF ENGINEER to be his free act and deed.

As witness my hand and notarial seal.

*[Handwritten Signature]*

**KIM ANDERSON YOUNG**  
**NOTARY PUBLIC**  
IN AND FOR GUAM, U.S.A.  
MY COMMISSION EXPIRES: March 02, 2013  
ORLEAN PACIFIC PLAZA SUITE 202B  
865 S. MARINE CORPS DRIVE  
TAMUNING, GUAM 96913



2nd FLOOR PARKING PLAN

- 608A
- 608B
- 609A
- 609B
- 610A
- 610B
- 611A
- 611B
- 703A
- 703B
- 704A
- 704B
- 601A
- 601B
- 701A
- 701B
- 612A
- 612B

- 602A
- 602B
- 603A
- 603B
- 604A
- 604B
- 605A
- 605B
- 606A
- 606B
- 607A
- 607B
- 702A
- 702B
- 512A
- 512B
- 412A
- 412B

- 202A
- 202B
- 203A
- 203B
- 204A
- 204B
- 209A
- 209B
- 210A
- 210B
- 211A
- 211B
- 502A
- 502B
- 503A
- 503B
- 504A
- 504B
- 505A
- 505B
- 506A
- 506B
- 401A
- 401B
- 305A

- 302A
- 302B
- 303A
- 303B
- 304A
- 304B
- 309A
- 309B
- 310A
- 310B
- 311A
- 311B
- 402A
- 402B
- 403A
- 403B
- 404A
- 404B
- 405A
- 405B
- 406A
- 406B
- 407A
- 407B
- 408A
- 408B
- 409A
- 409B
- 410A
- 410B
- 411A
- 411B
- 507A

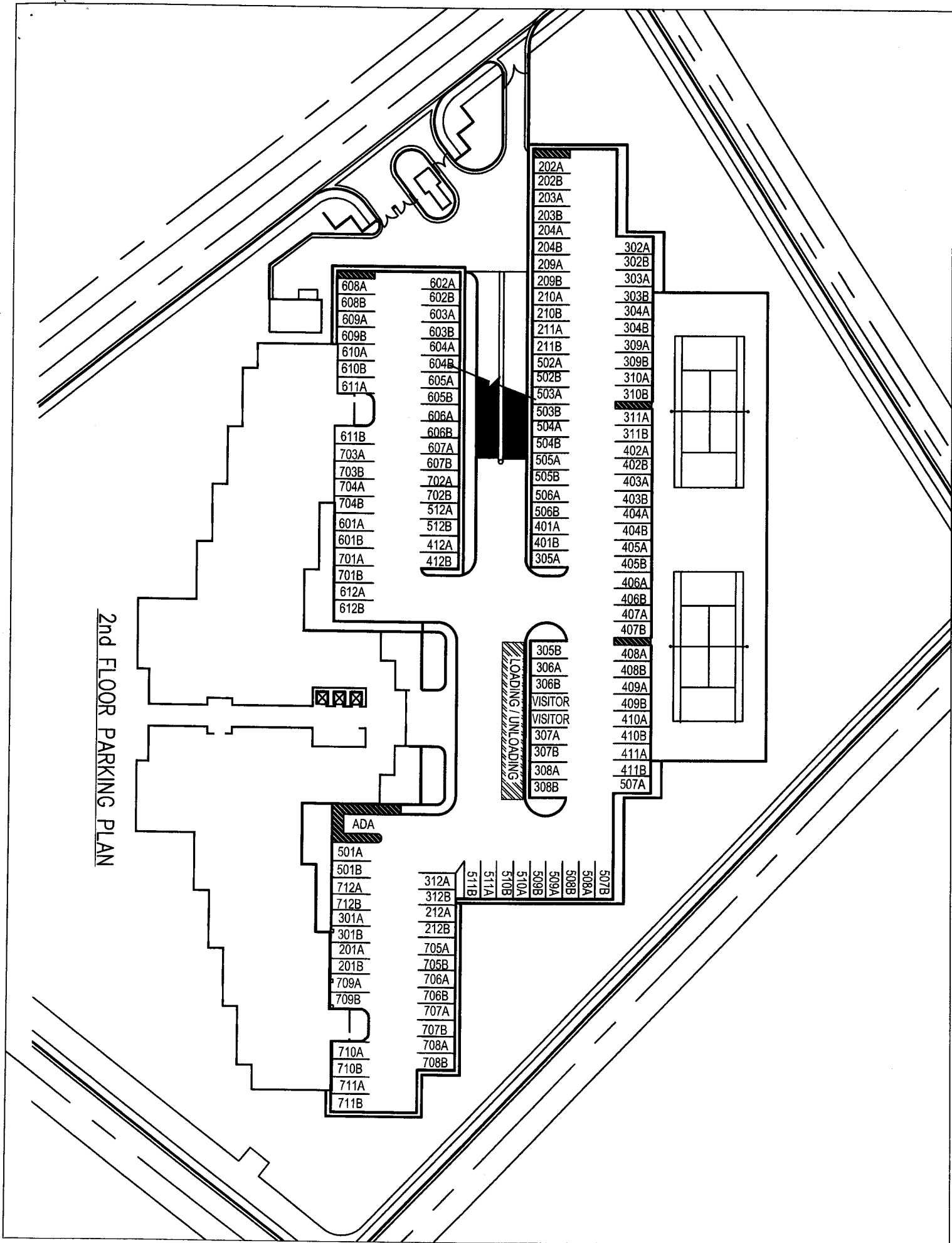
- 305B
- 306A
- 306B
- VISITOR
- VISITOR
- 307A
- 307B
- 308A
- 308B

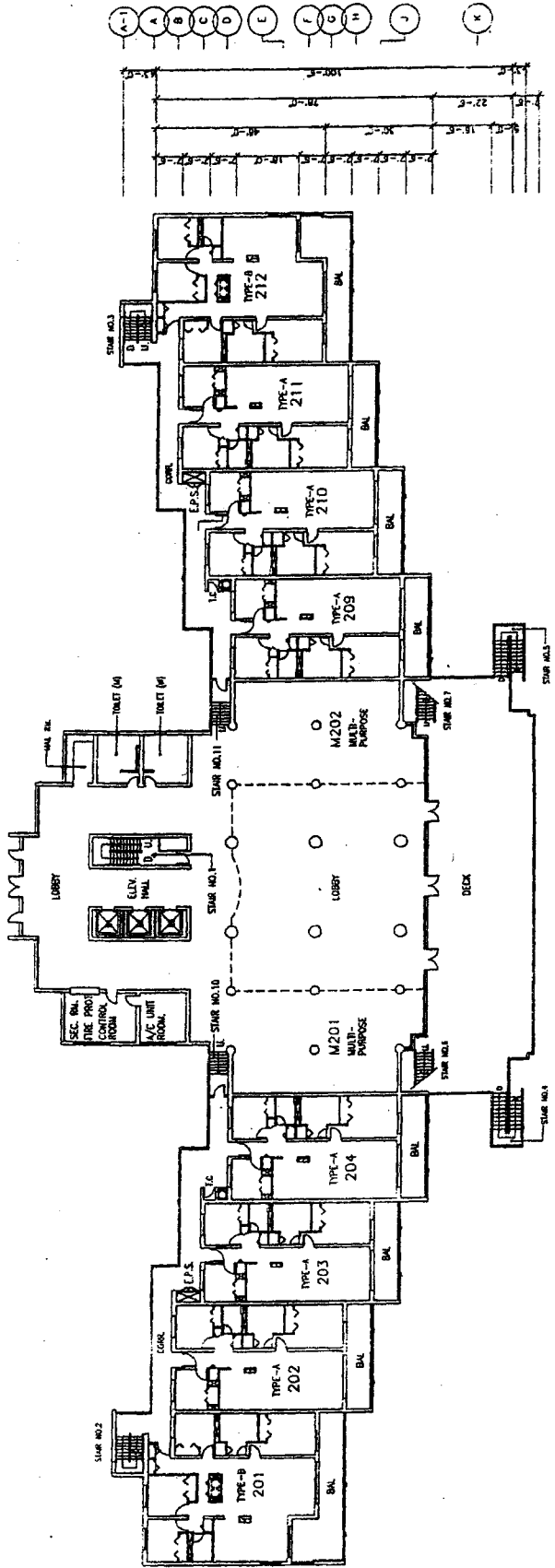
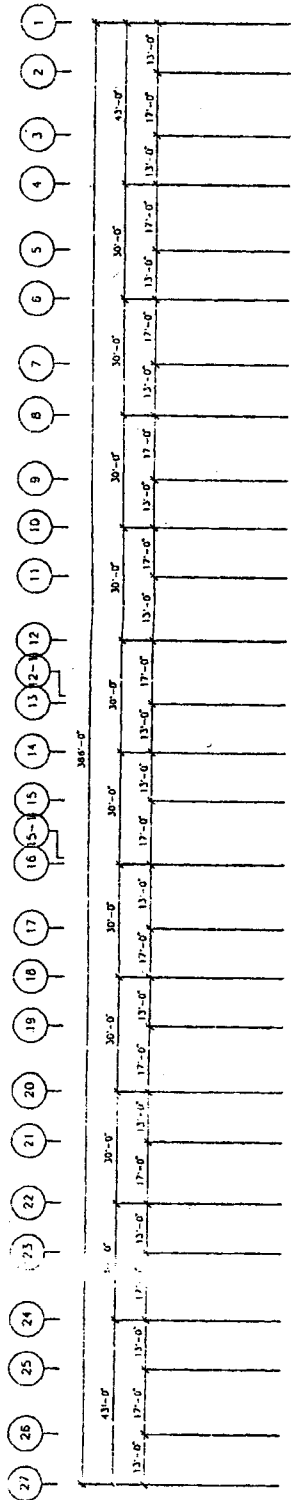
ADA

- 501A
- 501B
- 712A
- 712B
- 301A
- 301B
- 201A
- 201B
- 709A
- 709B
- 710A
- 710B
- 711A
- 711B

- 312A
- 312B
- 212A
- 212B
- 705A
- 705B
- 706A
- 706B
- 707A
- 707B
- 708A
- 708B

- 511B
- 511A
- 510B
- 510A
- 509B
- 509A
- 508B
- 508A
- 507B



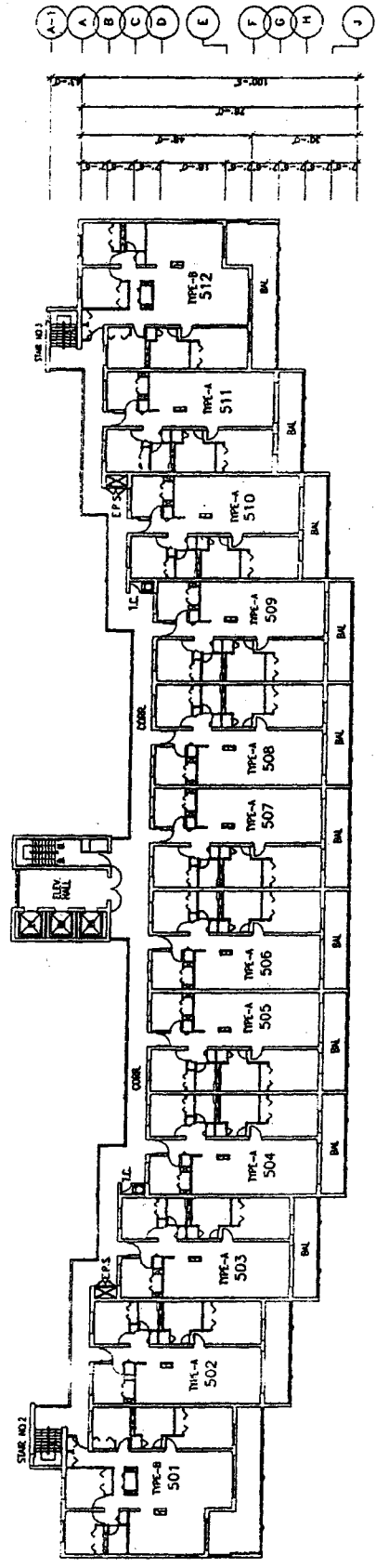
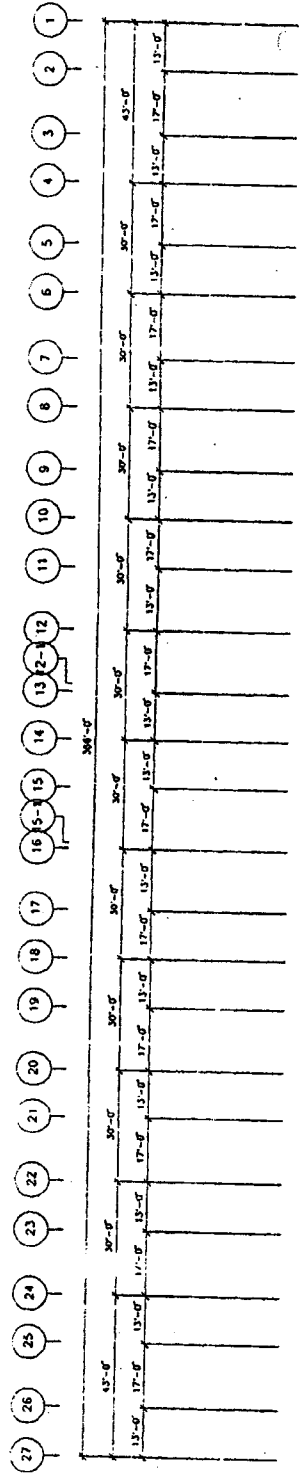


**2ND FLOOR PLAN**

0' 5" 10' 20' 30' 40' 50'





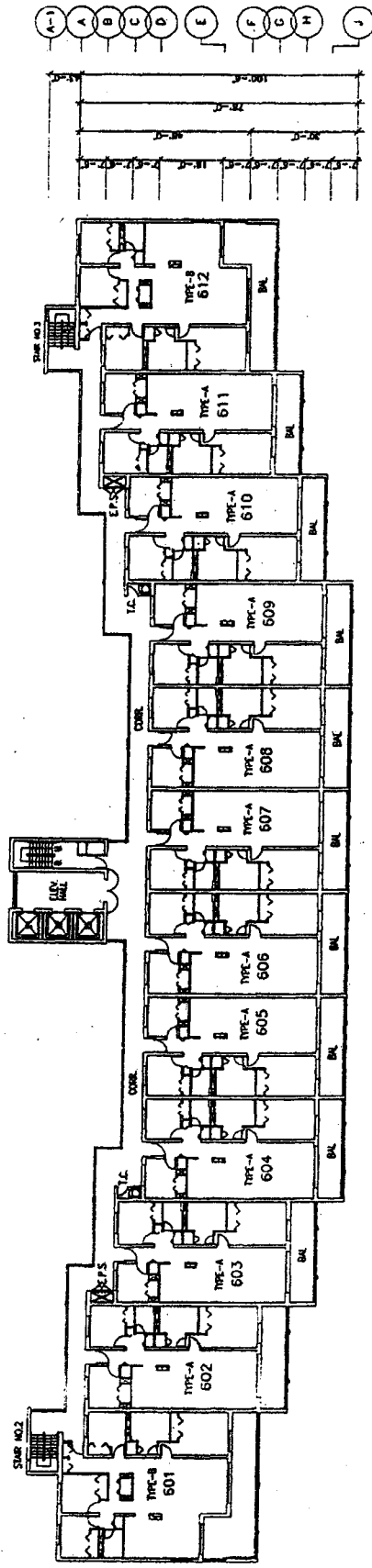
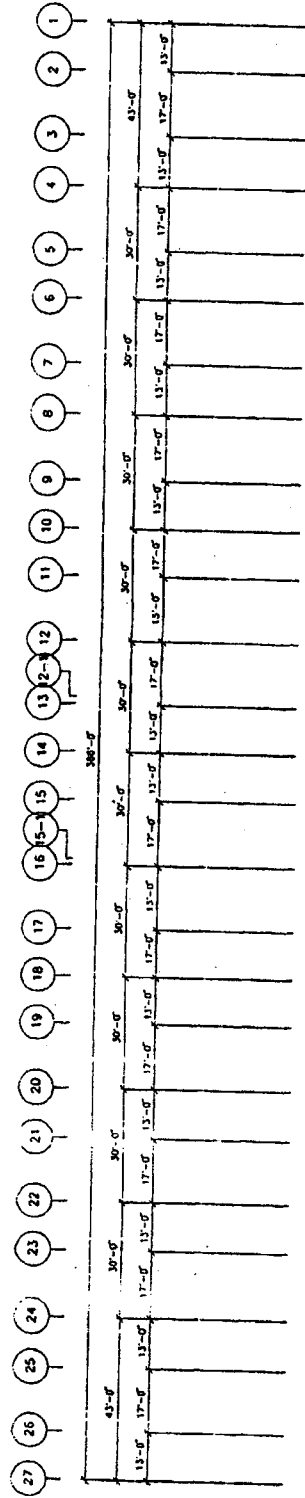


**5TH FLOOR PLAN**



0' 5" 10" 20' 30' 40' 50'

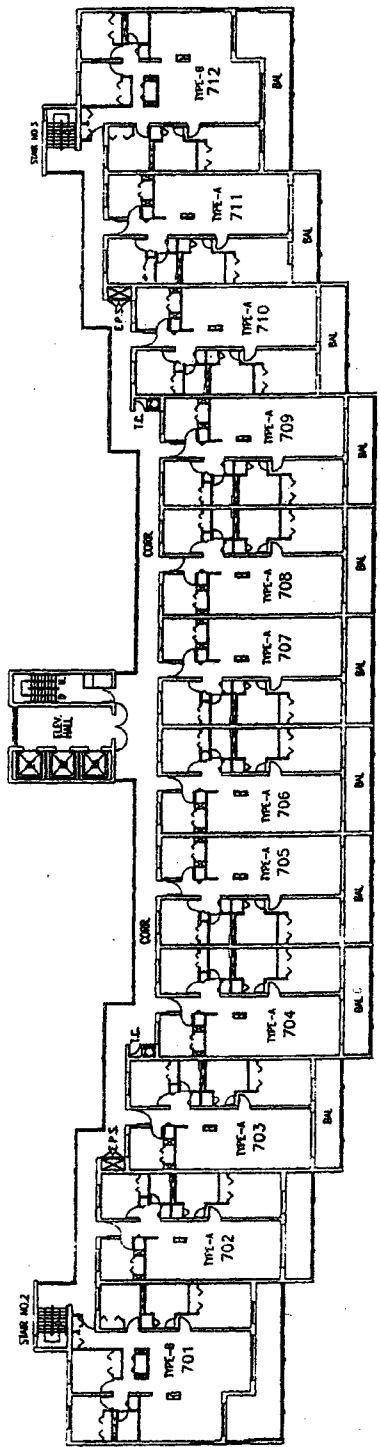
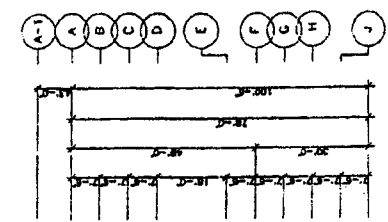
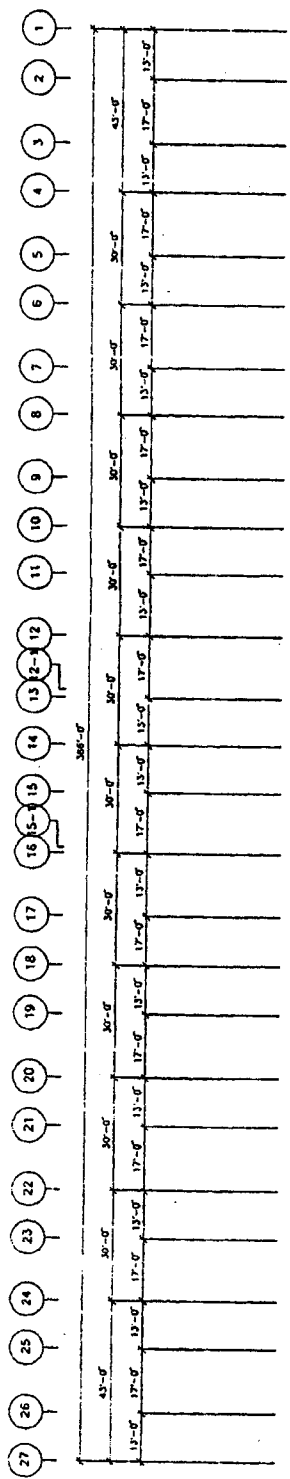




**6TH FLOOR PLAN**

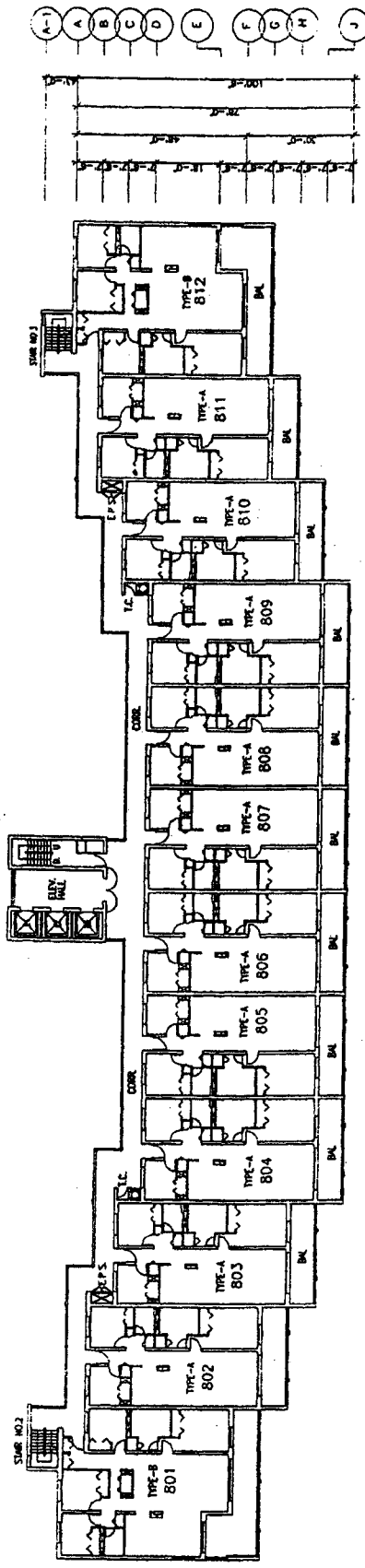
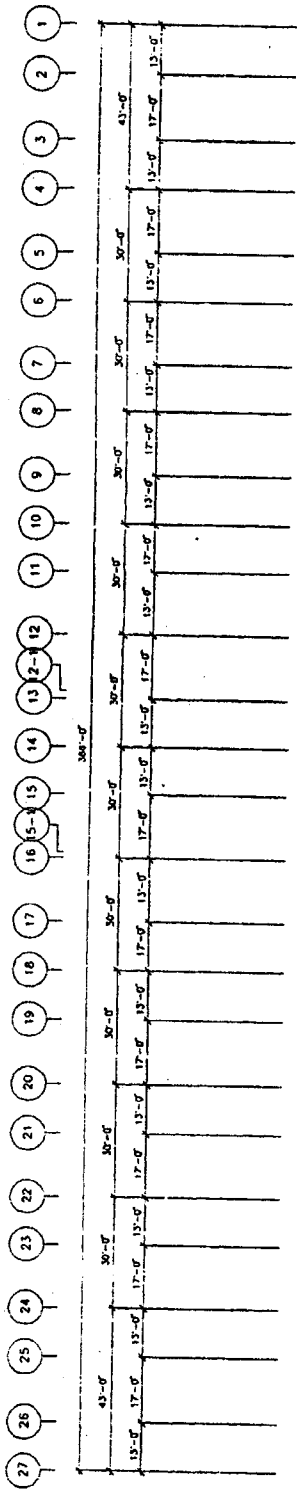


0' 5" 10' 20' 30' 40' 50'



**7TH FLOOR PLAN**

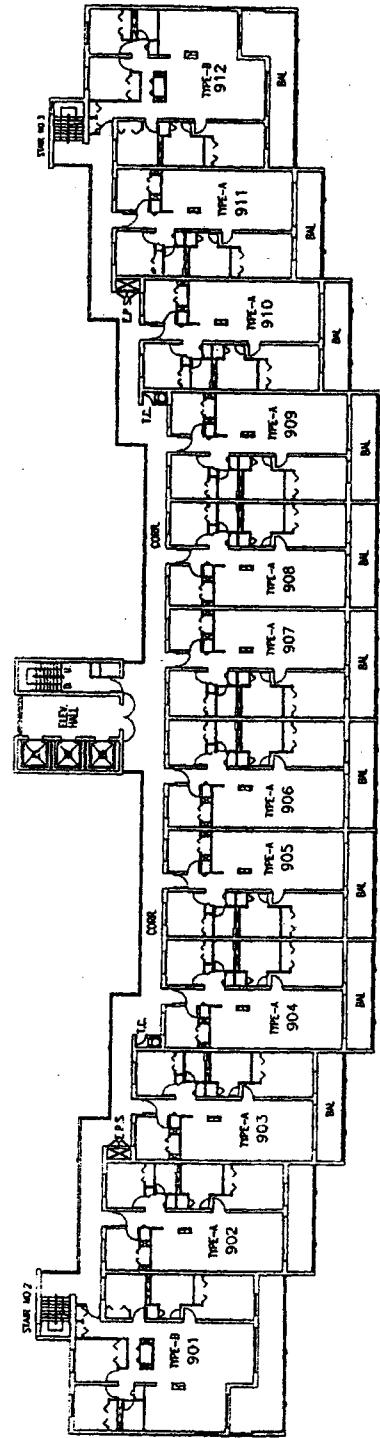
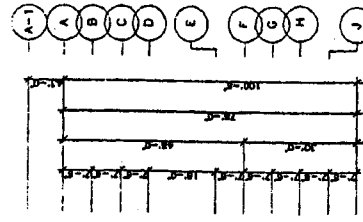
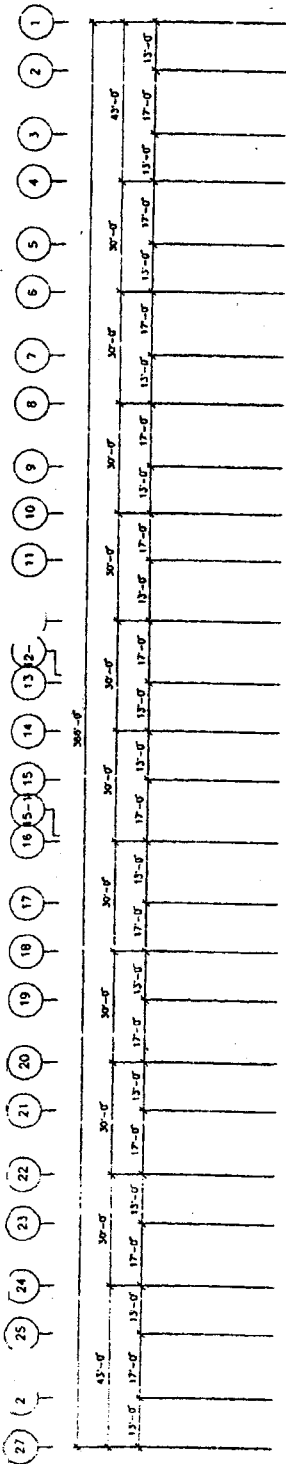
0' 5" 10" 20" 30" 40" 50"



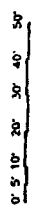
**8TH FLOOR PLAN**

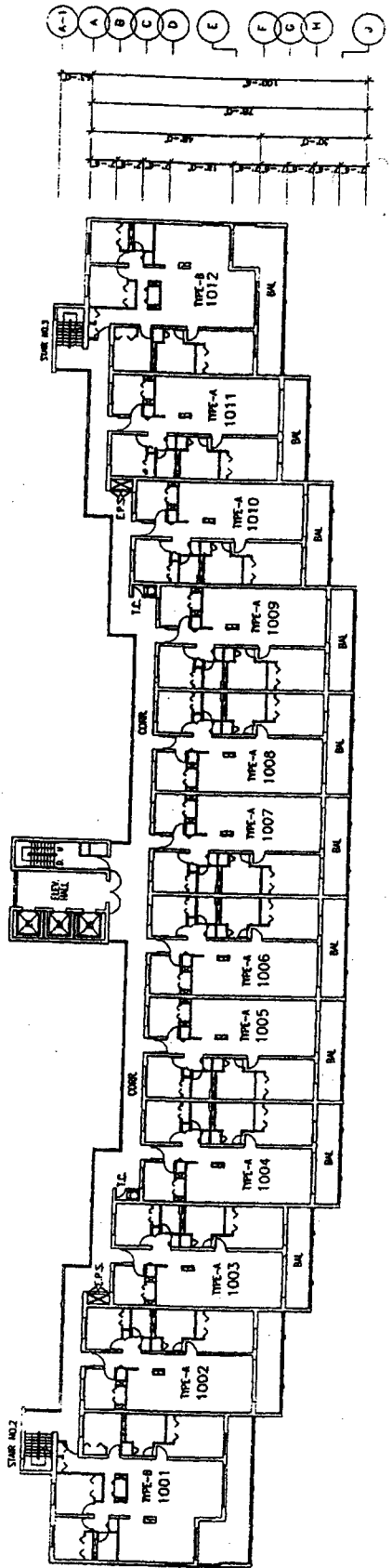
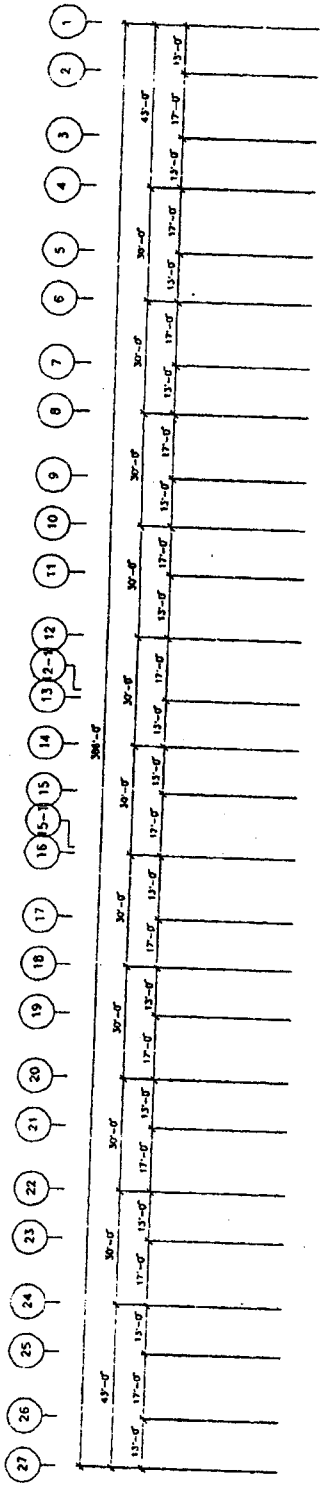


0' 5' 10' 20' 30' 40' 50'



**9TH FLOOR PLAN**

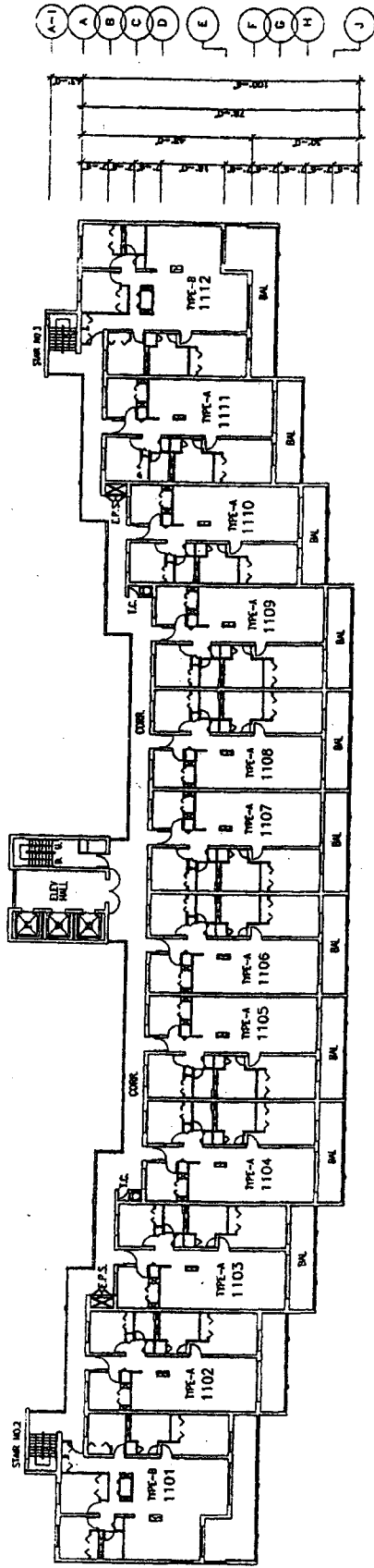
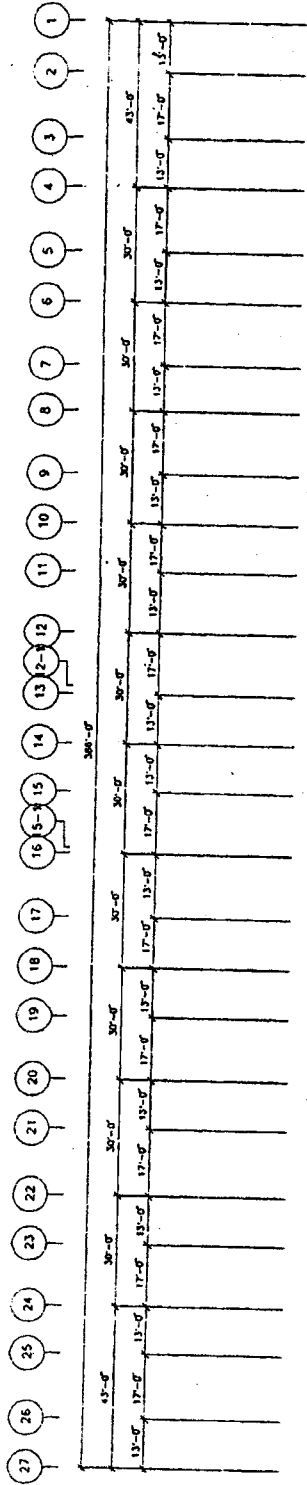




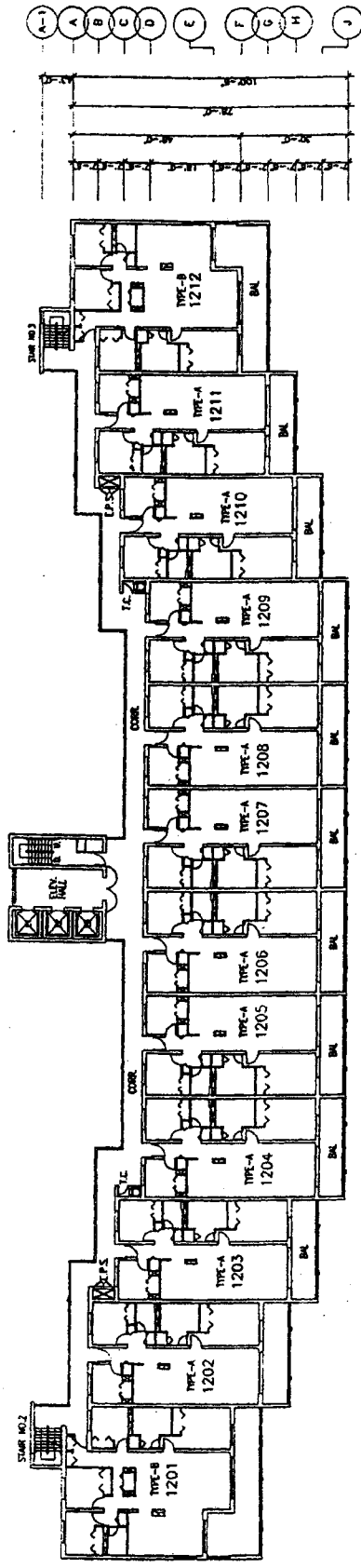
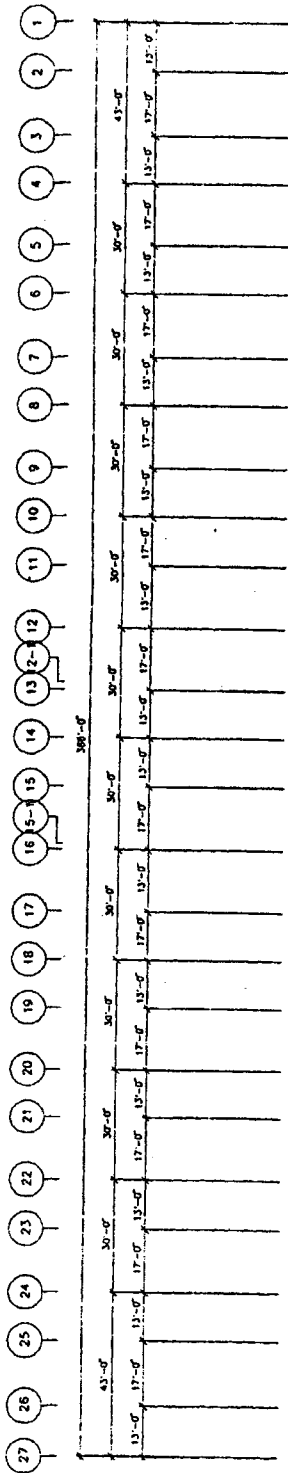
**10TH FLOOR PLAN**



0 5' 10' 20' 30' 40' 50'



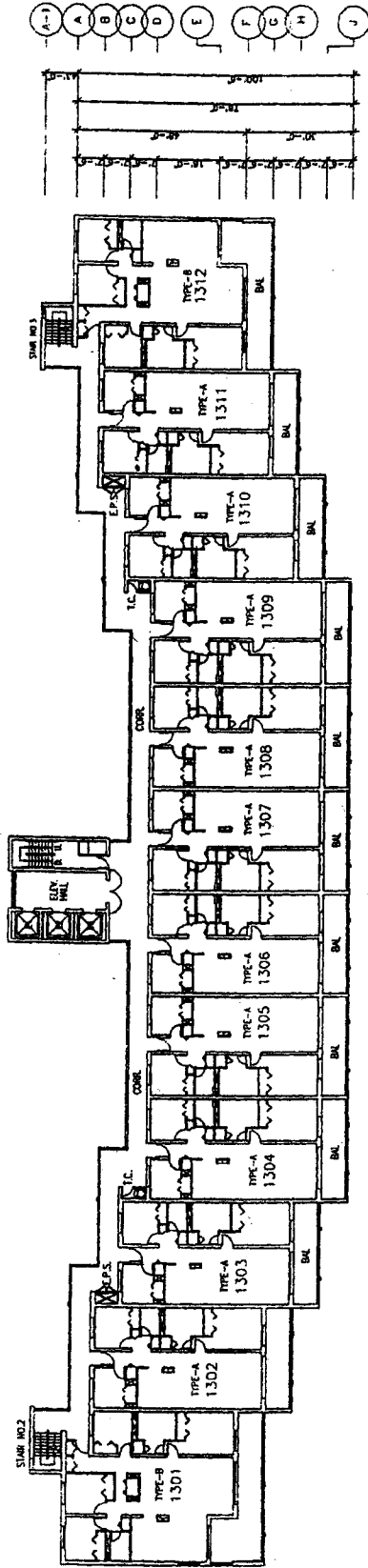
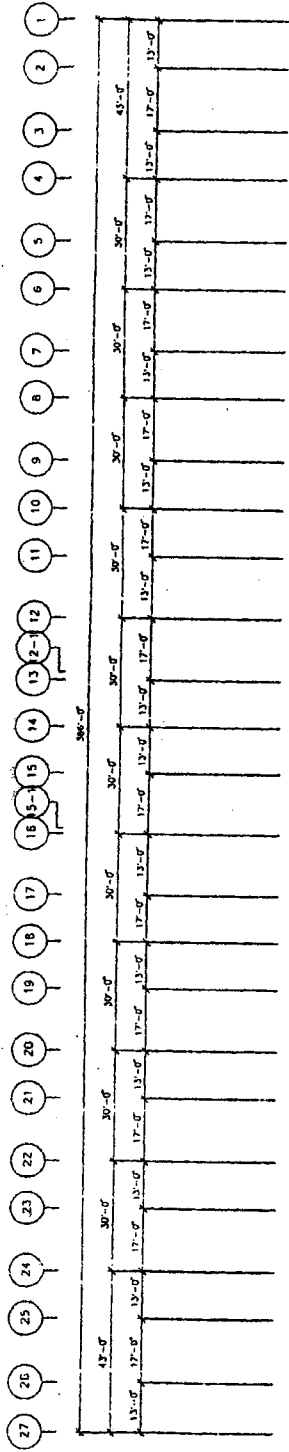
**11TH FLOOR PLAN**



**12TH FLOOR PLAN**



0" 5' 10' 20' 30' 40' 50'



**13TH FLOOR PLAN**

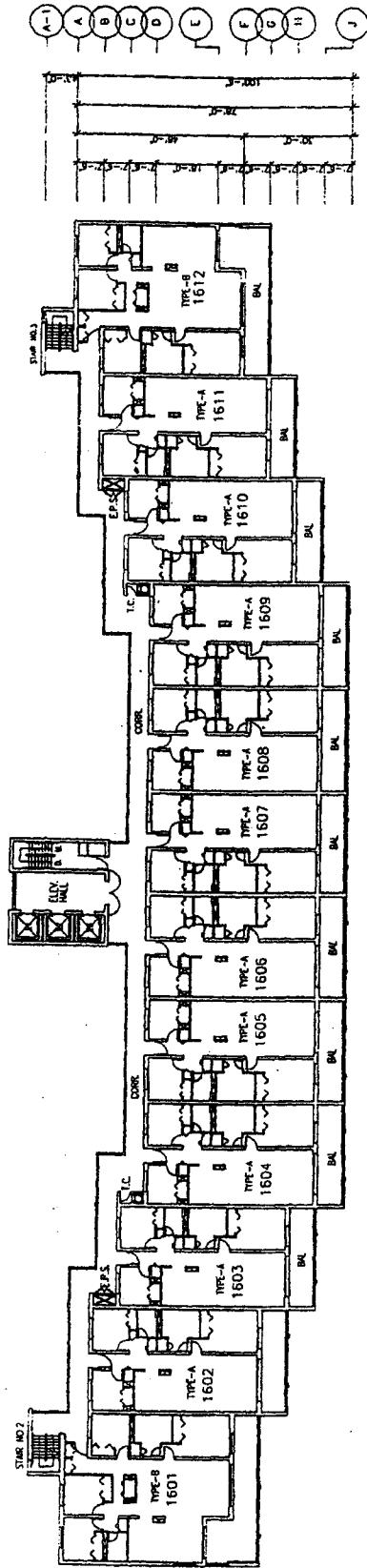
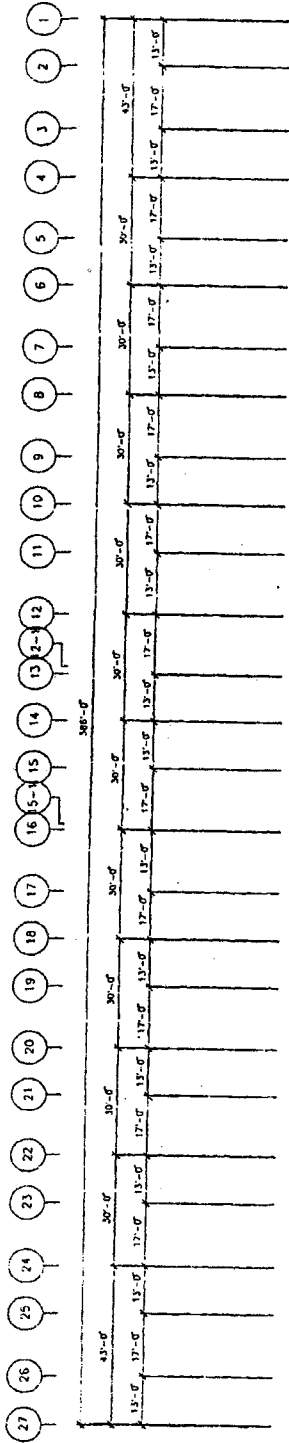


0' 5" 10" 20" 30" 40" 50"





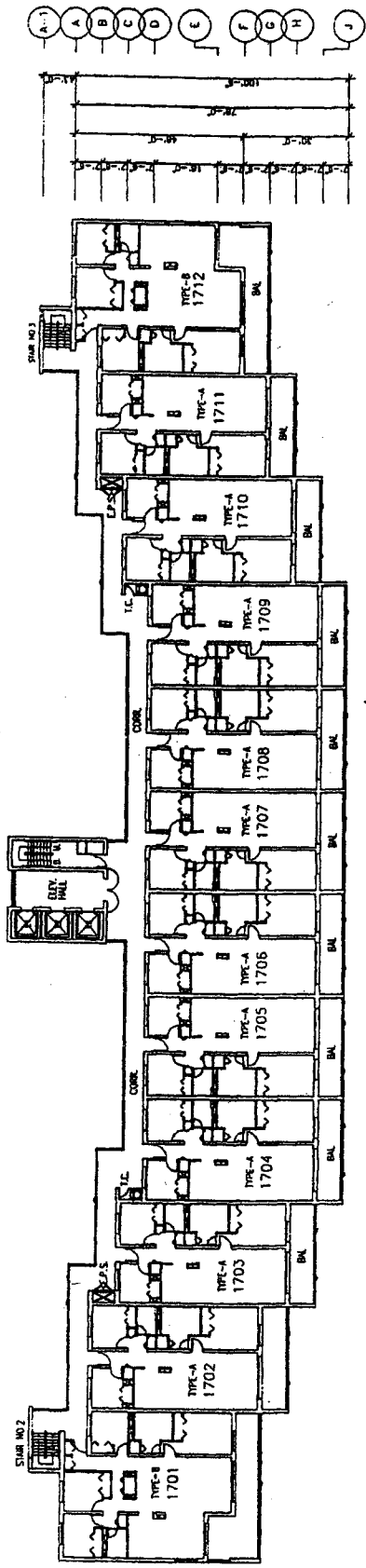
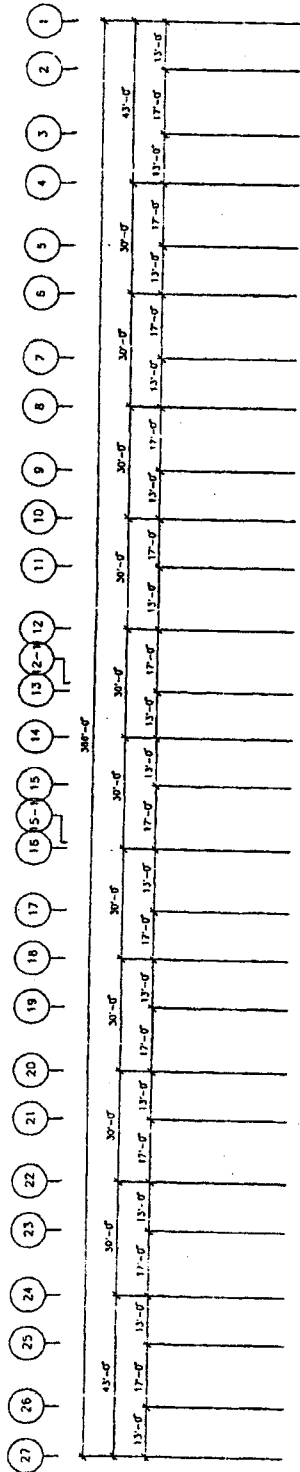




**16TH FLOOR PLAN**



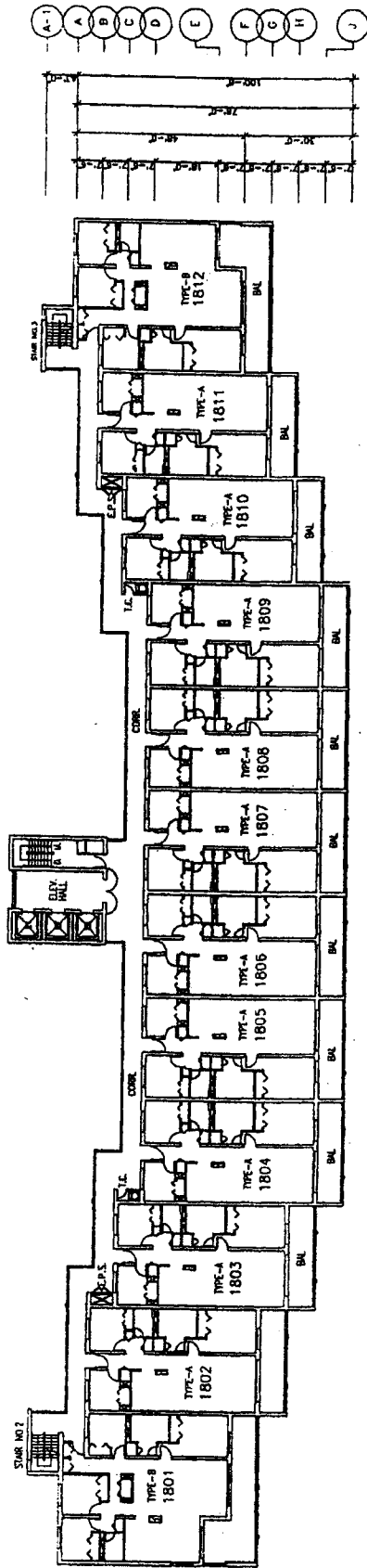
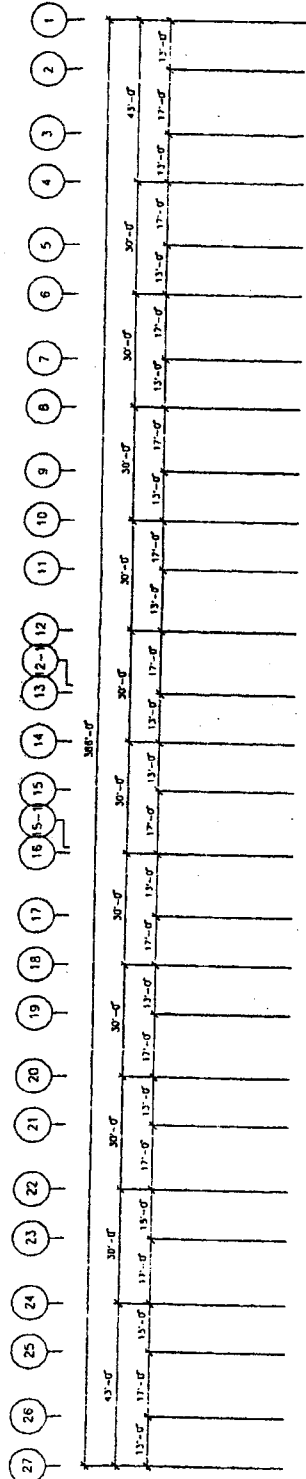
0' 5" 10' 20' 30' 40' 50'



**17TH FLOOR PLAN**

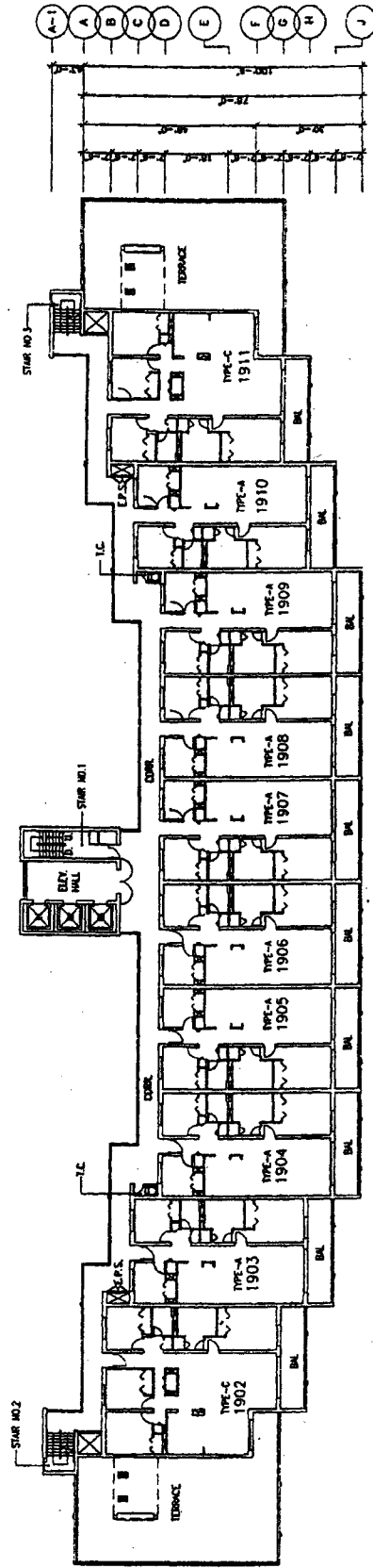
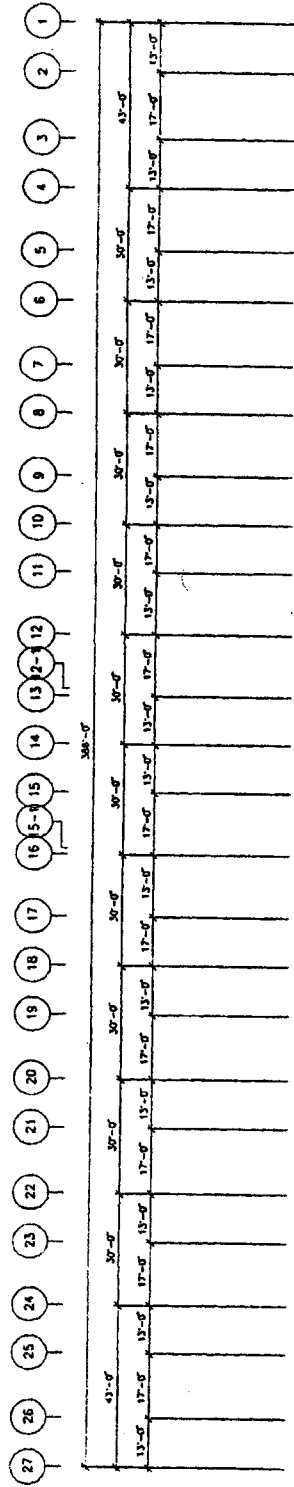


0' 5' 10' 20' 30' 40' 50'



**18TH FLOOR PLAN**

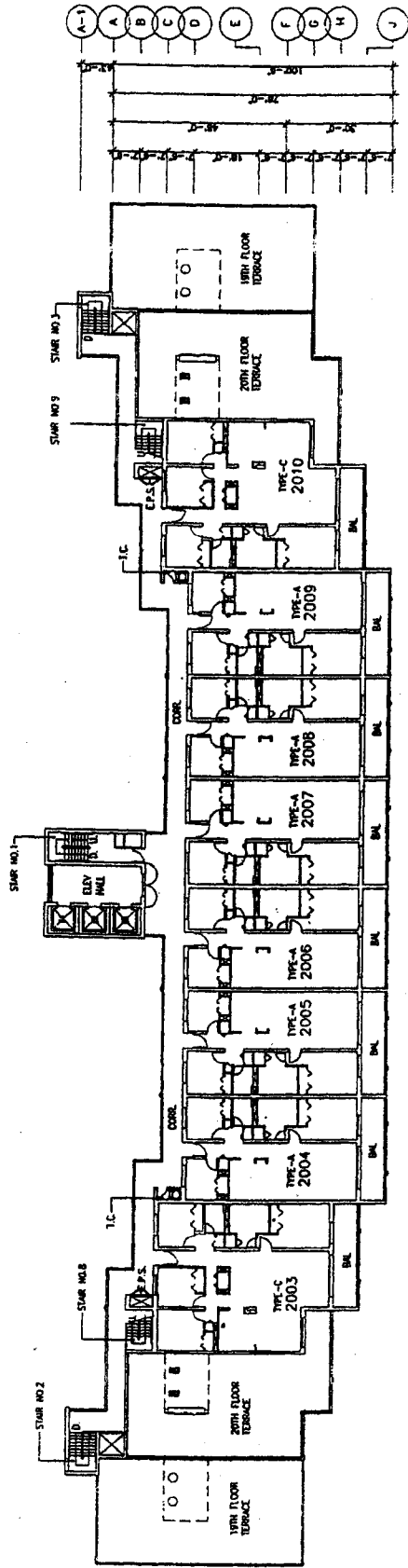
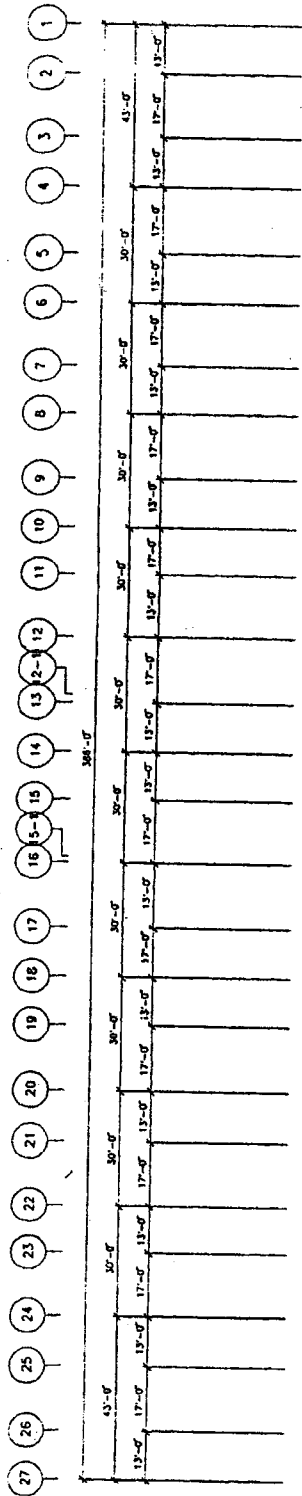
0' 5" 10' 20' 30' 40' 50'



**19TH FLOOR PLAN**



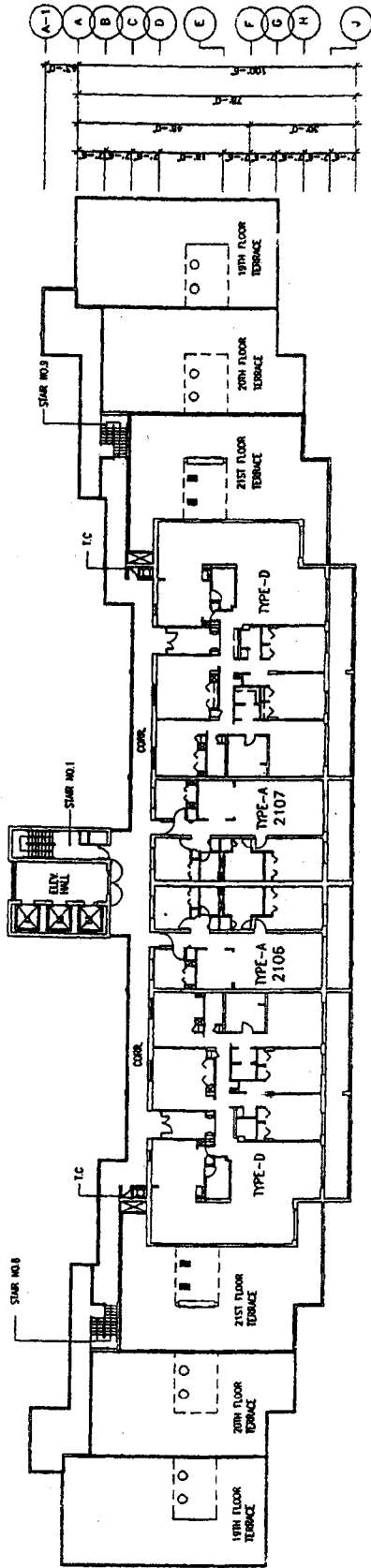
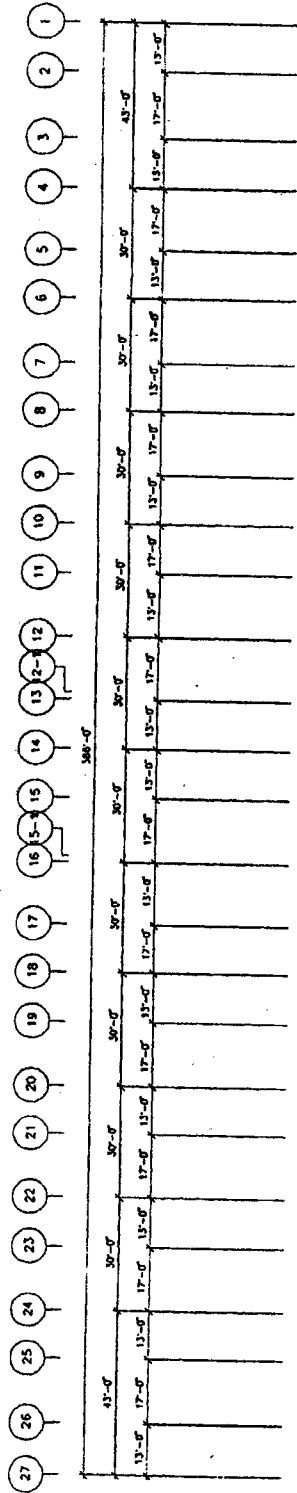
0' 5' 10' 20' 30' 40' 50'



**20TH FLOOR PLAN**



0' 5" 10" 20" 30" 40" 50"

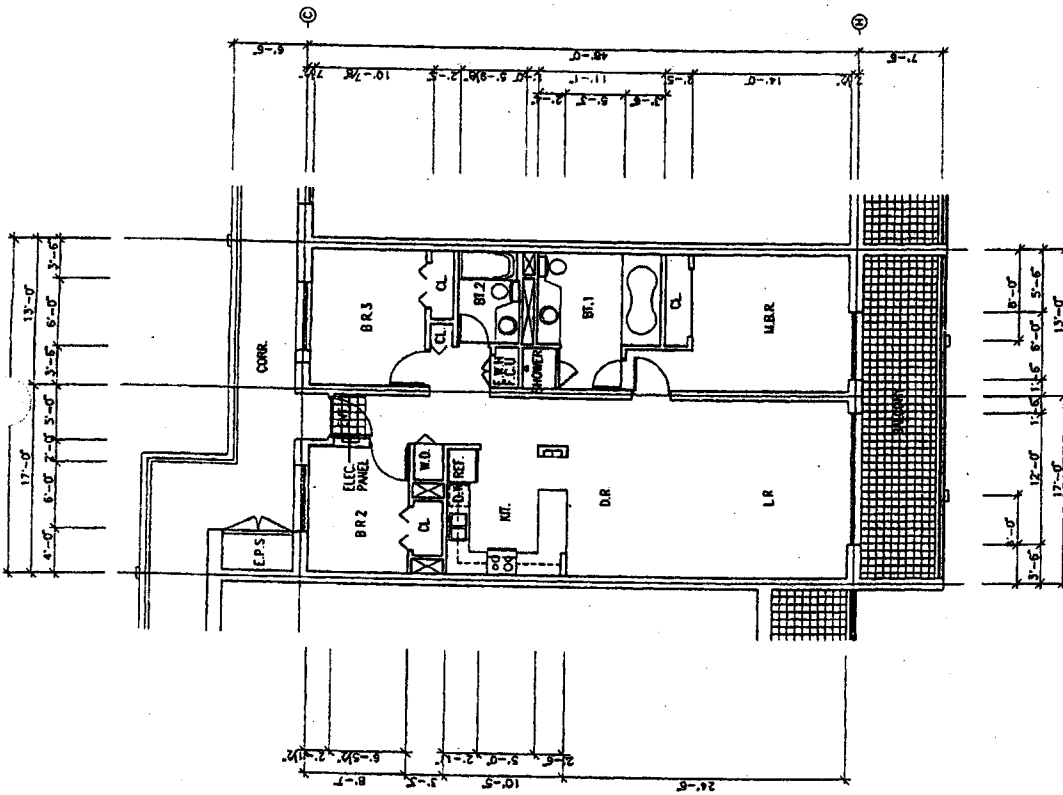


**21ST FLOOR PLAN**

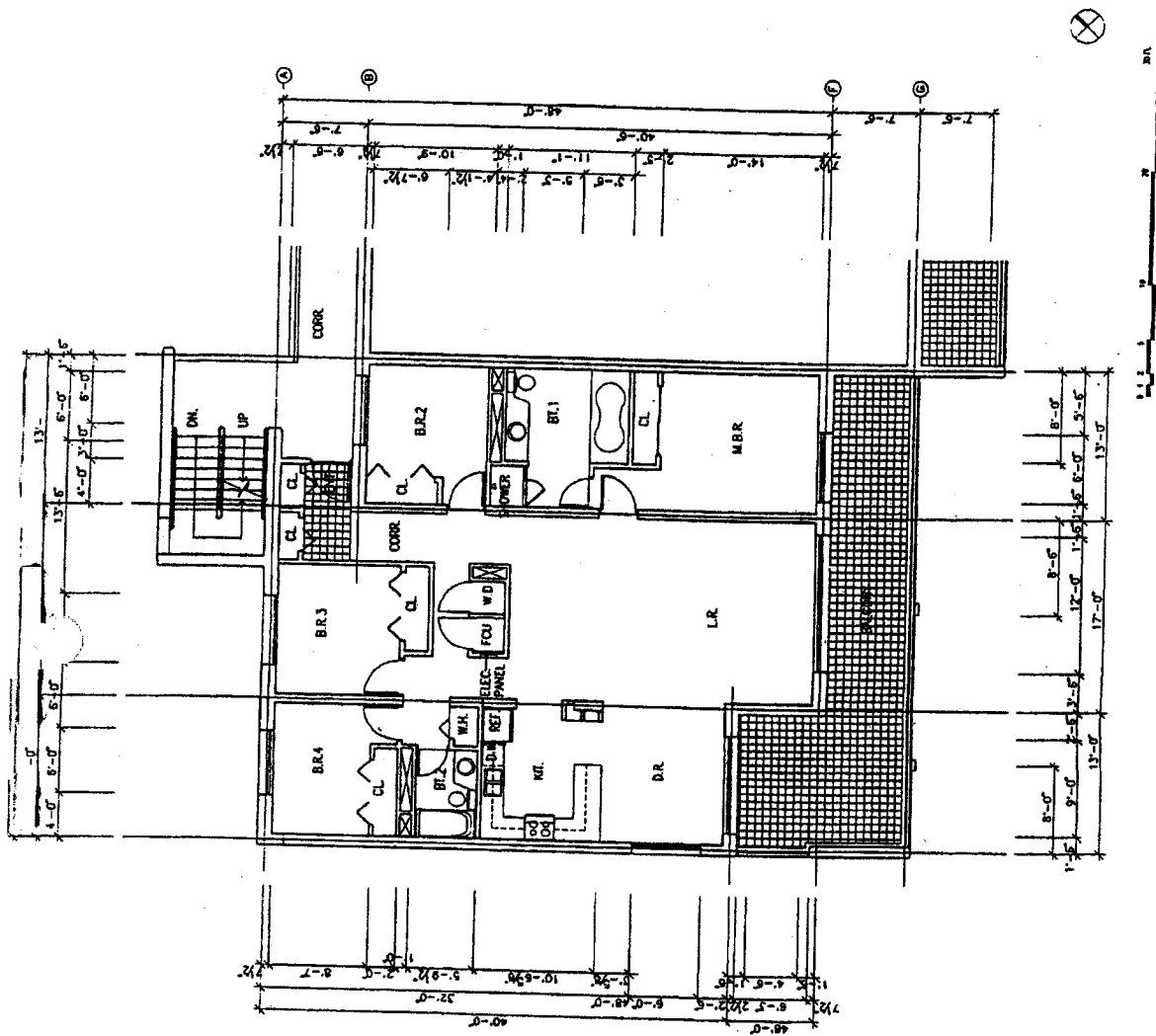


0' 5' 10' 20' 30' 40' 50'

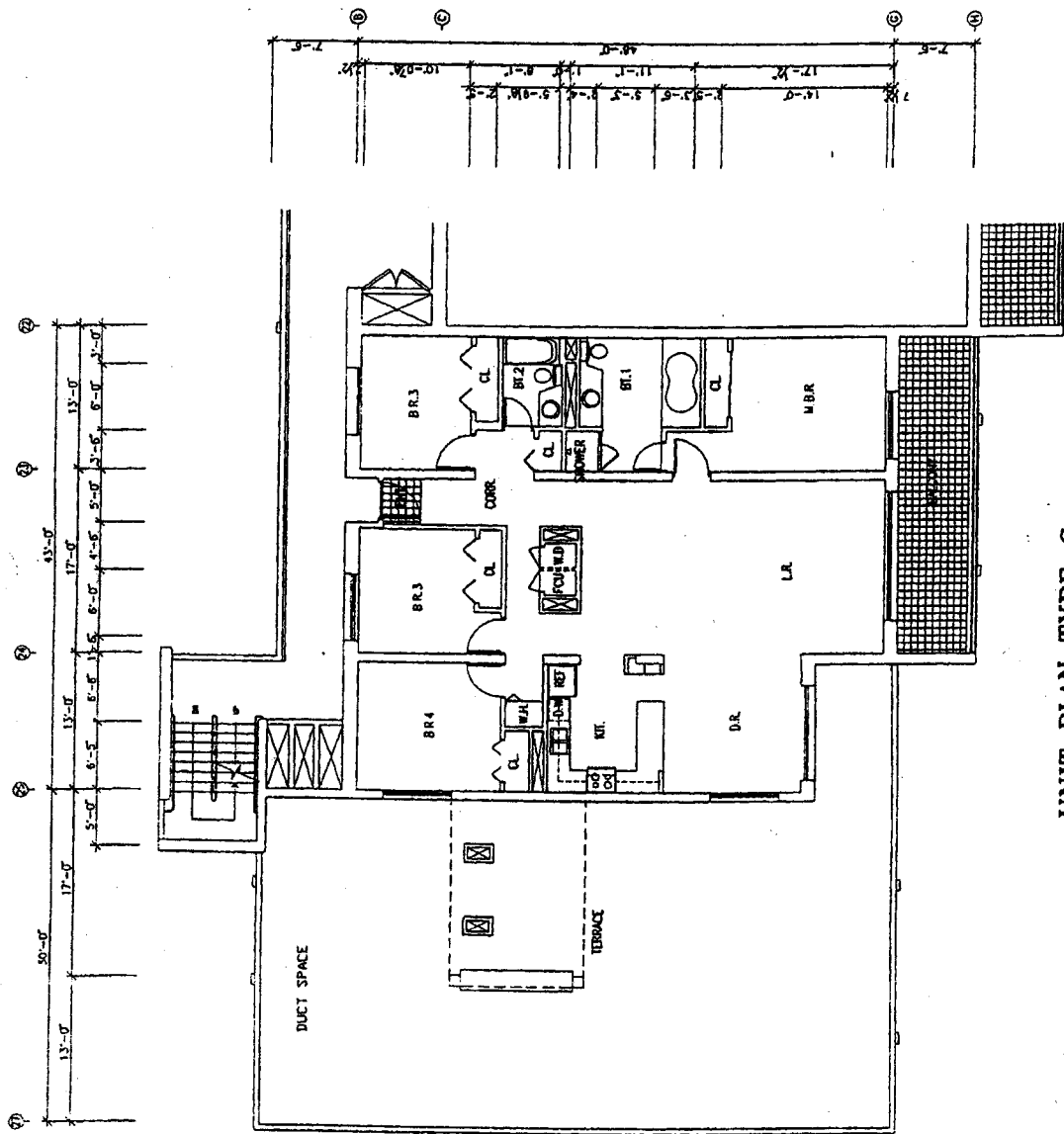




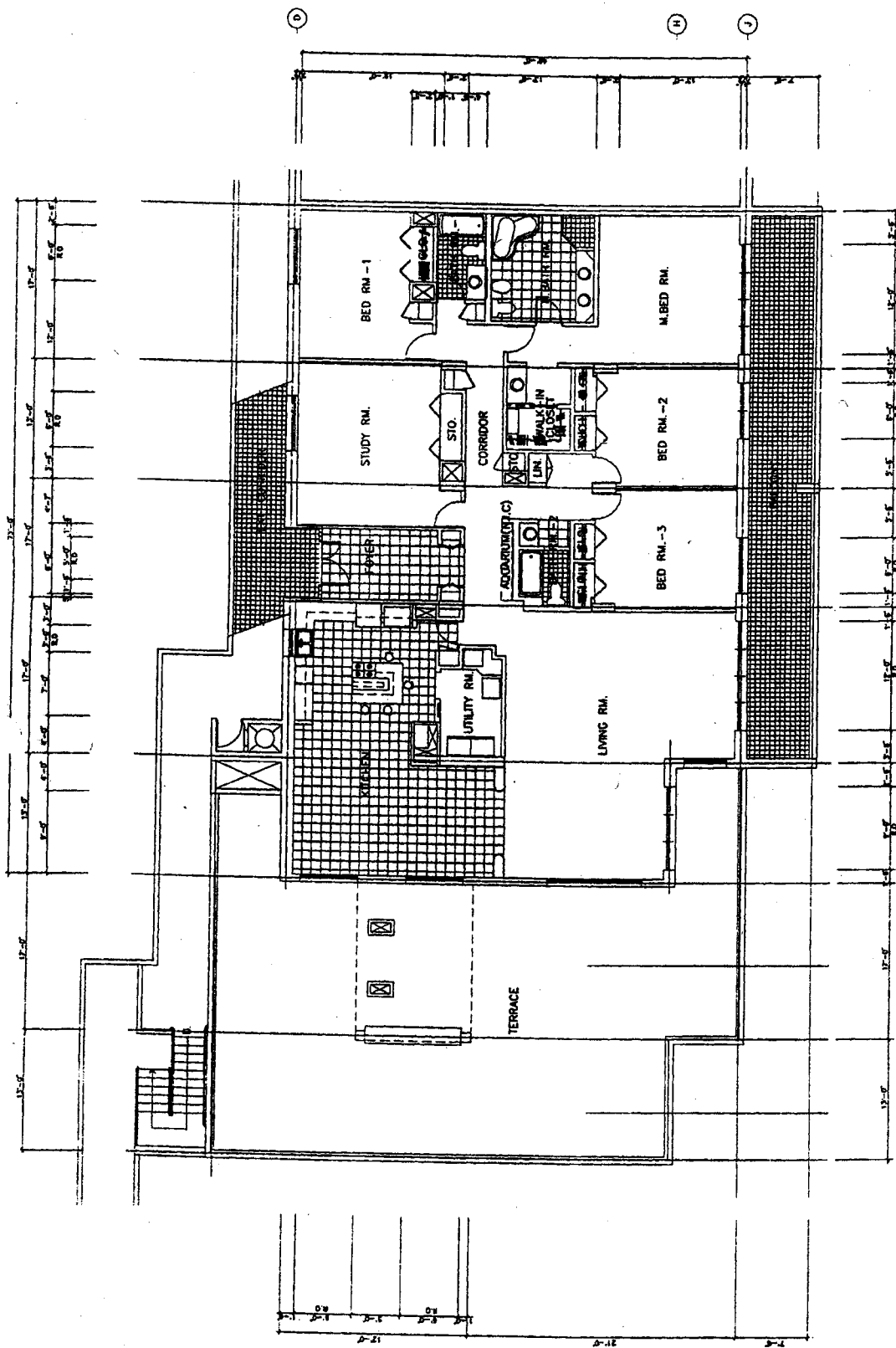
UNIT PLAN TYPE-A



**UNIT PLAN TYPE-B**



UNIT PLAN TYPE-C



**UNIT PLAN TYPE-D**

4.0 CT

2.0

1.0

0

5

10

15

20

25

30

35

40

45

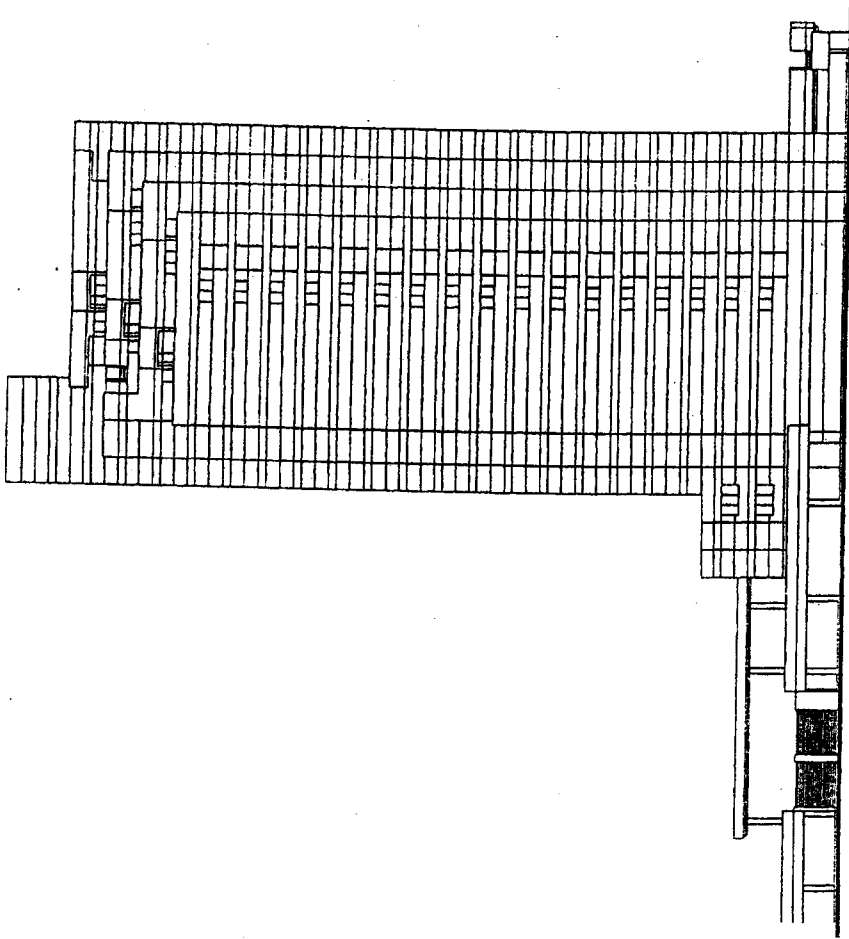
50

55

60



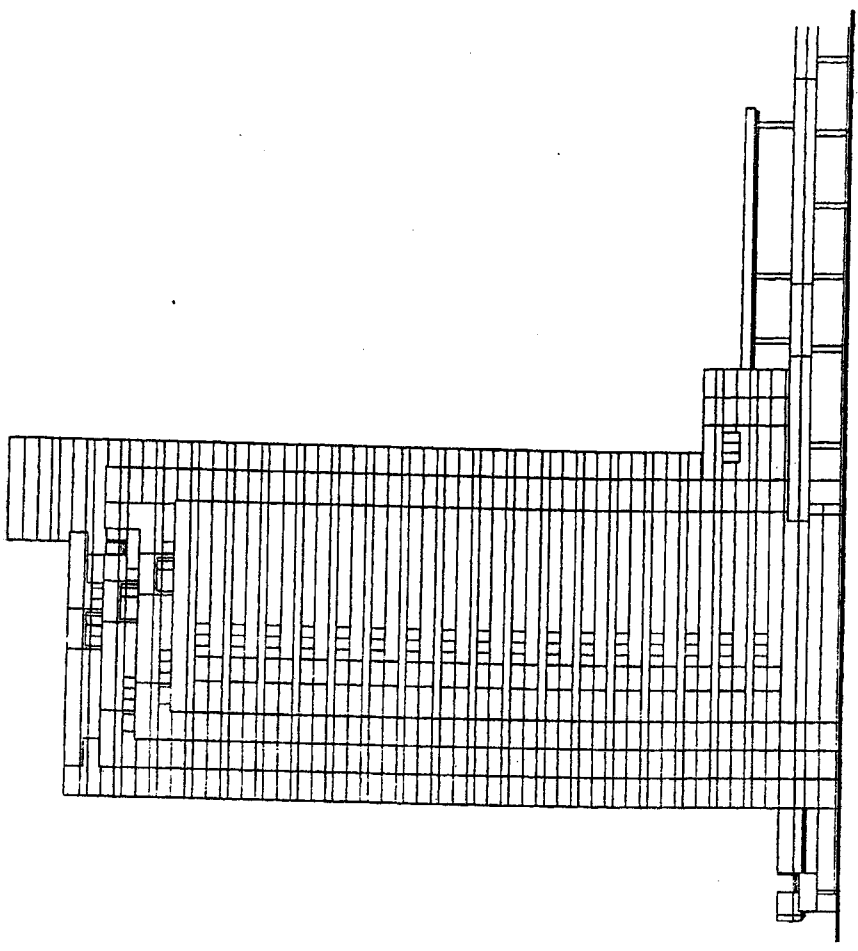




+12.20' 12'-0" ROOF  
 +11.15' 11'-0" FLOOR  
 +10.15' 10'-0" FLOOR  
 +9.15' 9'-0" FLOOR  
 +8.15' 8'-0" FLOOR  
 +7.15' 7'-0" FLOOR  
 +6.15' 6'-0" FLOOR  
 +5.15' 5'-0" FLOOR  
 +4.15' 4'-0" FLOOR  
 +3.15' 3'-0" FLOOR  
 +2.15' 2'-0" FLOOR  
 +1.15' 1'-0" FLOOR  
 +0.15' 0'-0" FLOOR  
 -0.15' 0'-0" FLOOR  
 -1.15' 1'-0" FLOOR  
 -2.15' 2'-0" FLOOR  
 -3.15' 3'-0" FLOOR  
 -4.15' 4'-0" FLOOR  
 -5.15' 5'-0" FLOOR  
 -6.15' 6'-0" FLOOR  
 -7.15' 7'-0" FLOOR  
 -8.15' 8'-0" FLOOR  
 -9.15' 9'-0" FLOOR  
 -10.15' 10'-0" FLOOR  
 -11.15' 11'-0" FLOOR  
 -12.20' 12'-0" ROOF

**WEST ELEVATION**

0 5 10 20 40 FT



EAST ELEVATION

0 10 20 40 FT

- 112-2011-01
- 112-2011-02
- 112-2011-03
- 112-2011-04
- 112-2011-05
- 112-2011-06
- 112-2011-07
- 112-2011-08
- 112-2011-09
- 112-2011-10
- 112-2011-11
- 112-2011-12
- 112-2011-13
- 112-2011-14
- 112-2011-15
- 112-2011-16
- 112-2011-17
- 112-2011-18
- 112-2011-19
- 112-2011-20
- 112-2011-21
- 112-2011-22
- 112-2011-23
- 112-2011-24
- 112-2011-25
- 112-2011-26
- 112-2011-27
- 112-2011-28
- 112-2011-29
- 112-2011-30
- 112-2011-31
- 112-2011-32
- 112-2011-33
- 112-2011-34
- 112-2011-35
- 112-2011-36
- 112-2011-37
- 112-2011-38
- 112-2011-39
- 112-2011-40
- 112-2011-41
- 112-2011-42
- 112-2011-43
- 112-2011-44
- 112-2011-45
- 112-2011-46
- 112-2011-47
- 112-2011-48
- 112-2011-49
- 112-2011-50
- 112-2011-51
- 112-2011-52
- 112-2011-53
- 112-2011-54
- 112-2011-55
- 112-2011-56
- 112-2011-57
- 112-2011-58
- 112-2011-59
- 112-2011-60
- 112-2011-61
- 112-2011-62
- 112-2011-63
- 112-2011-64
- 112-2011-65
- 112-2011-66
- 112-2011-67
- 112-2011-68
- 112-2011-69
- 112-2011-70
- 112-2011-71
- 112-2011-72
- 112-2011-73
- 112-2011-74
- 112-2011-75
- 112-2011-76
- 112-2011-77
- 112-2011-78
- 112-2011-79
- 112-2011-80
- 112-2011-81
- 112-2011-82
- 112-2011-83
- 112-2011-84
- 112-2011-85
- 112-2011-86
- 112-2011-87
- 112-2011-88
- 112-2011-89
- 112-2011-90
- 112-2011-91
- 112-2011-92
- 112-2011-93
- 112-2011-94
- 112-2011-95
- 112-2011-96
- 112-2011-97
- 112-2011-98
- 112-2011-99
- 112-2011-100



